



MSSRF -Tsunami News

Life Beyond Tsunami: Relief and Rehabilitation

Greetings

The second newsletter from MSSRF – Tsunami desk is reaching you now. In this edition we have made an attempt to capture the processes completed and results and learning gained through the activities carried out in the field. As usual contribution from the Programme Directors of the respective areas to prepare this newsletter is well appreciated.

I look forward to receive your valuable feedback.



M.S. Swaminathan Research Foundation is making initiatives for medium and long term rehabilitation programmes based on its long time experiences in the coastal villages. The framework suggested by Prof.M.S. Swaminathan Chairman MSSRF (in his article published in The Hindu January 17,2005) 'Beyond Tsunami: An agenda for action' focusing on



- (i) strengthening the ecological foundations of sustainable human security,
- (ii) rehabilitating livelihoods and fostering sustainable livelihood security and
- (iii) putting in place knowledge centers

was taken to design and implement the activities.

The Foundation has been working to develop bio-shields, rebuild the livelihoods, establish the Village Knowledge Centres and for soil reclamation of the Tsunami affected agricultural fields in three villages in Cuddalore district, eight villages in Nagapattinam district, two villages in Chengalpattu district, two villages in Kanyakumar district and four villages in Pondicherry (two in Karaikal region and two in Pondicherry region). Process mode has been adopted to facilitate the activities. Effective coordination was ensured with the fishermen and agricultural communities, and also with other NGOs and government departments involved in similar activities in the Tsunami villages. The village development councils (with the representation of village leaders traditional and elected panchayat, SHG leaders etc) play very crucial role in identifying the concerns, planning, implementing and monitoring the activities of Tsunami rehabilitation.

Contents

Restarting the livelihood through catalytic interventions in selected villages

Bioshilds for ecological restoration

Agronomic rehabilitation

ICT based Villge Knowledge Centres for Strengthening the Ecological and Livelihood Security of Coastal communities

Psychological rehabilitation

Toolkits and Capacity building

Long term Educational and Nutritional Support for children orphaned by Tsunami

Friends of MSSRF support for Tsunami rehabilitation

Restarting the livelihood through catalytic interventions in selected villages

The support extended by MSSRF to the villagers of Samiyarpettai (Cuddalore district), Muzukuthurai (Cuddalore district) and Madavamedu (Nagapattinam district) helped to repair the boat, engine and buying new nets (providing support to buy net was identified as a gap filling measure in these hamlets- other NGOs working in these villages have provided the service to repair the boats and also new boats). The village level committee played the crucial role in pooling and distributing the resources received from MSSRF and other NGOs to the local people with out any internal conflict.

The following table gives the details about the net and engine and boat repairing activities supported by MSSRF.

Net, Engine and Boat	Number	Fishermen
Salngu valai (used for shrimp fishing)	279	53
Kendaivalai ((fishing in the river fisher like mullet)	180	27
Valai valai (Makeral like fishes)	1367	401
Engine	2	2
Boat	2	2

Training on need based skill development: Mechanics to repair the engine and boats are generally not available in all coastal villages, and the local fishermen hire them. Developing the skill to repair the engine and boats were identified as one of the important needs of the fishermen in the post Tsunami

context. Keeping this in mind a hands on training programme was organized for a week in a workshop at Cuddalore. 12 youths from above mentioned three project villages received training on Lambardini engines. The training programme covered the



Oorpadu (community fishing) in Madavamedu

Roughly after ten years the villagers organized 'Community fishing' activity in Manavamedu village with the participation of the entire community.

Traditionally the community fishing activity is organized to manage the fund required to meet the common causes of the village. In the present context the reason for community fishing is to clear the loan they got from different sources after the Tsunami incident. The support received from the MSSRF and other NGOs to mend nets and repair boats were pooled and used by the community to restart the fishing activity. Each day around 30 boats with 8 members from each boat went for fishing. The following fishes were caught Perumbarai, Vaval, Surai etc.

The total catch is around ten tones and the amount earned is around two lakhs.

Introduction to engines, engine parts, operational method, and the

problems frequently expected while fishing in the sea and how to solve them. The feed back from the trainees shows that they



are confident to repair most of the problems they would encounter, they require training again on a few aspects during the lean season, they requested a tool kit box, and need a training manual in Tamil. This knowledge would help them to ensure the

quality when they buy new or second hand engines in the future.

They also like to take up training to repair Reeves engine. MSSRF has approached the Reeves company to organize the training programme.

The fisher women of Samiyarpettai, Muzukuthurai, and Madavamedu have revived back the fish vending, dry fish business and petty business. The revolving fund support provided by MSSRF saved them from entering in to the debt trap of the middlemen. The following are the details of the number of the SHG women got the support and the purpose for which they got the loan for the last two months.

Number of women used the money for fish vending:	64
Number of women used the money for Dry fish business:	50
Number of women used the money for petty business:	7

At Sadraskuppam in Kancheepuram district, to support the Tsunami victims two enterprises poultry farm (Broiler birds) and mushroom (oyster) production were initiated with the collaboration of MSSRF. Two women SHGs are being involved in poultry management. After 40 days around 4300 birds were lifted for marketing and net profit made by the SHGs were around Rs.25,000/-. The groups found the activity is profitable and are planning to go for the next batch. Similarly another women SHG is involved in mushroom production. The group members were taken for an exposure visit to another SHG producing mushroom in Pondicherry. The group members started selling the product in the local market.

PRA to identify the local concerns: After two meetings with the leaders and other villagers of

Madavamedu village, it was decided to organize the PRA onMonday (on Monday fishermen of this village do not go for fishing, hence suggested by the community as appropriate day). A team of experts from MSSRF, around 40 men and 60 women participated in the exercise. At the outset MSSRF team explained the purpose of PRA and emphasized the strength of the approach and requested the participation and cooperation of the entire community. The community members assembled over there appreciated the method and promised to extend full cooperation. It was decided to start with the Social mapping of the village. A few enthusiastic individuals initiated the mapping exercise which was followed by the participation of the entire group. It took three hours to complete the mapping process. Different categories of households (social and economical), infra structure facilities etc were listed out. Smaller groups were formed to collect more details about each household. At the end a detailed discussion was held focusing on the major common concerns of the village, which need to be addressed, the list was prioritized and finalized as follows.

The results of the exercise

Need to dig (de silt) the canal (for about one and half kilometers), which is located on the other side of the village. This would facilitate a better tidal fluctuation for mangrove regeneration and also help to keep the boats safely.

Need to generate more employment to fish workers who work as laborers in the boats owned by other fishermen.

Need to develop a sand dune along the seashore for about one kilometer to cover the hamlet from any future disaster. The villagers suggested three local species as soil binders which could be planted over the sand dune.

Need to increase the drinking water supply, which is being provided by the government from outside.

Need to improve the source for fuel wood.

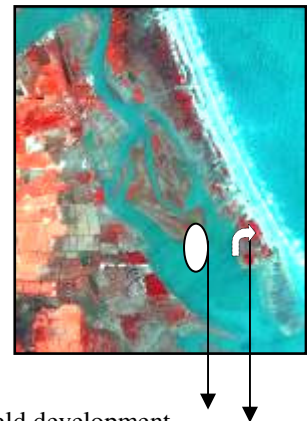
The possibility to organize mobile medical facility.

At the end it was decided to go for the other exercises like livelihood analysis, resource mapping, gender analysis and vendiagram etc, on a mutually convenient date.

Bioshields for ecological rehabilitation

Developing Mangrove Bioshield

As a continuation of the discussion held with the villagers, a joint visit was made by both the community members and the MSSRF staff to conduct the micro level biophysical survey for suitability assessment. This revealed that mangrove bioshield could be established in about 20 ha in the areas around Muzhukkuthurai, which is near to the existing Pichavaram mangroves. A high resolution remote sensing imagery was used to identify the site. Regarding ownership, this site belongs to Revenue Department and hence permission from the Revenue Department is necessary before undertaking any activities. After discussing with the local community it was decided that Revenue Department would be approached for permission through the local elected Panchayat.



Areas identified for bioshield development

A resolution indicating that the Killai Panchayat is interested to raise and manage mangrove bioshield with the participation of the Muzhukkuthurai village with the technical support of MSSRF was passed in the Panchayat council meeting, and submitted to the District Authorities for necessary action.

Meanwhile, discussion with the villagers of the Muzhukkuthurai indicated that the entire community shown interest to participate in developing and managing the mangrove bioshield. In Madavamedu village a small narrow patch of degraded mangrove exists, this mangrove can be restored with the participation of the fishing families of the Madavamedu village. The ownership of this degraded mangrove land, whether it belongs to Tamil Nadu Forest Department or Revenue Department, is still not clear and attempts are being made to get ownership details approval for necessary permission for initiating the work.

Non-mangrove bioshield

In all the three project villages a) Samiarpettai, b) Muzhukkuthurai and c) Madavamedu there is a possibility to develop and manage non-mangrove bioshield. Discussion with the Samiarpettai villages indicated that developing of coconut groves along the coastline near their village would be beneficial to them both as a bioshield as well as a source of income. The other species the community members preferred is *Thespecia* (poor man's teak). In the case of Madavamedu village, casuarina and coconut could be raised nearby the village and the local people are also very much interested to grow various kinds of tree species within their village. Possibility of developing casuarina in the coastal areas of the Muzhukkuthurai is being examined.

In Sadraskuppam, it is planned to develop bioshield (with non mangrove species) for one kilometer covering the entire length of the sea shore facing the village. One men SHG has taken the responsibility to develop and manage the bioshield. The species preferred by the community are a) Coconut b) Cashewnut and c) *Thespecia*. The nursery for the bioshield is already developed. They are waiting for the monsoon season to start the planting. The coconut and casuarinas saplings planted in the past are well managed by the men SHG. The SHG meets and discusses about the activities related to implementing and monitoring the bioshield on every Friday.

Agronomic rehabilitation

Traveling workshop on Agronomic Rehabilitation of Tsunami Ravaged Lands in Tamil Nadu
16-18th July 2005



Tsunami waves caused extensive damage to the basic agricultural resources like soil and water as

well as to standing crops like Paddy, groundnut, etc in some of the regions of Tamil Nadu and Pondicherry. Across the affected areas the intensity as well as type of the damage varies. Since the devastating incidence took place, several players like Department of Agriculture, Tamil Nadu along with concerned research institutes and NGOs etc have been involved in rehabilitating the affected resources, farmers and agricultural labour communities who lost the employment opportunities.

In this situation, to understand the multi-dimensional nature of the problem and to develop soil health rehabilitation package a traveling workshop was organized from 16th to 18th July 2005 with multidisciplinary experts from different parts of the country. The participants visited the following nine villages (spot measurements for pH and EC were conducted in 18 fields and discussions with farmers were held in all villages except Thirumullaivasal) in Nagappatinam and Cuddalore districts on 16th and 17th July 2005 and on 18th at Chennai the team discussed the observations and arrived at certain conclusions.

Villages visited: 1.Pushpavanam 2. Vellapallam 3. Manikapanku 4. Kumarakudi 5. Kalamanallur
6. Neithavasal 7. Vellapallam 8. Thirumullaivasal 9. T.S.Pettai

The field problems and recommendations for follow-up action are summarized below.



I. Soil Reclamation

In the soil, Tsunami waves caused three kinds of major damages such as

- (i) Deposition of slushy grayish brown clay deposit
- (ii) Deposition of sandy soils and
- (iii) Sea water intrusion, which receded (within 3 hrs to one week from the field) leaving salts in the field.

Management of slushy grayish brown clay deposit

- The deposit can be mixed with soil by ploughing and it will improve soil texture especially of the surface soil, water holding capacity and soil fertility. The incorporation of deposited material will not act as physical barrier since it forms crack on drying and after mixing. The higher amount of salts will get leached down after the rainy season and thus it will not be a permanent source of salts which could affect the root growth.
- In some of the farmer's fields the deposit was scrapped and kept it in a field itself as heaps. It should be spreaded and incorporated into the soil to avoid the development of localized salinity.

Management of sandy soils

Need not be scraped, instead ploughed back in the field itself. Where ever the material has been collected and left in the field as small heaps, it should be spread again in the field and mixed with the soil, leaving as such in the form of heap will aggregate local salinity.

iii) Sea water entered and receded leaving salts

This kind of damage is noticed in few areas of Nagappatinam and Cuddalore districts. The seawater entered into the field directly as well as through backwater canals. The entered water receded with in a few hours (quickly) in some areas and five to seven days (slowly) in some other parts. Soil analysis shows that the soils have become salanised and not sodic and the soluble salts are dominated by Cl and SO₄ and not by CO₃ and bicarbonates. Hence during leaching the pH will not go up, ESP and EC will decrease simultaneously during the reclamation process. Different soil depth analysis indicate that the top 0-2 cm depth soil has an EC of 25-120 ds m⁻¹ with a pH of 7.2 – 8.2. Hence leaching with sufficient amount of canal water rainfall shall help to overcome the problem

Use of gypsum for reclamation

- There is no need to have a blanket application of gypsum for reclamation in the entire affected areas. Gypsum application should be location specific i.e. where the pH is >8.5, ESP>15 and cases where during reclamation the pH increases. It should be followed purely on the basis of soil test results.
- The gypsum supplied to the farmers could be applied at the rate of upto 500 kg per hectare could be used to meet Calcium and Sulpur nutrition needs of oil seed crops like Gingelly and groundnut.

Use of Organic Manure

Since the soils are sandy in texture, the practice is mono -cropping, have low amount of organic Carbon and farmers are encouraged to go for green manuring in addition to judicious application of FYM and compost etc and application of biofertilizers.

II. Contamination of small water ponds with sea water and deposits

Most of the small water ponds located in the fields which, are the source of irrigation for the second and third crop, were severely affected and at present it is saline in nature. Therefore it is suggested that

- Physical removal of contaminated water through tankers and connected pipelines and paving ways to recharge with monsoon rains
- Surface leaching thro rainfall and canal water
- Promoting rain water harvesting – household and farm ponds
- Desilting and interlinking drainage channels which facilities the easy flow of water

III. Cropping

1. Suitable Crops and Varieties suggested for the forth coming season

Tolerant crops / varieties have to be grown in the first year and the first crop should be preferably rice

Rice – TRY 1, TRY (R) 2, CO 47, ADT 43 and ADT 36

Ragi -TRY 1, Sunflower – CO 4, Groundnut – VRI 2

Green gram (K 851, Pusa bold)

Brinjal (PLR 1, AU 1), Cluster bean (Pusa Now bahar)

Jack (Palur 1), Pomegranate (Ganesh), Sapota (PKM 1)

Cashew (VRI 2 & 3), Amla (BSR 1) and Tamarind (PKM 1)

2. Specific agronomic practices for Rice

Aged seedlings (one week more than normal age) may be planted

Higher number (4 – 6 Nos.) of seedlings per hill may be planted

25% extra N at basal may be added

Higher dose (40 kg/ha) of zinc sulphate has to be applied

At panicle initiation and 15 days after, foliar spraying of DAP 2% along with 1% urea and 1% potash may be done for increasing the yield

STL based P application or apply 15 kg P/ha as maintainer dose

Sowing sprouted seeds 3 DAS under delayed canal water/excess rainfall

3. Application of FYM and Micro nutrients: Upto 12 t/ha may be followed for all the crops and recommended dose of Zinc sulphate in alkali soils with pH above 8.5.

4. Introducing field specific suitable Integrated Farming System models involving crop-animal combination with suitable animal breeds and allied enterprises

5. Crop diversification: Promotion of horticulture and tree crops and value addition by primary processing of the produce

6. Multiple Livelihoods: There is a need to promote additional on-farm and non- farm enterprises like coconut based value added product preparations, apiculture, diary, small growers poultry estates, cashew processing, production of biofertilizers and biopesticides etc with appropriate backward, lateral and forward linkages. This would promote multiple employment opportunities not only to the majority of small and marginal farmers but also to the landless labourers who also form a sizable part of the local population and who have lost their livelihood opportunities.

Names of the Organizations participated in the workshop

Central Soil Salinity Research Institute, Karnal, Indian Agriculture Research Institute, New Delhi, National Bureau of Soil Survey and Land Use Planning , Regional Centre, Bangalore, ICRISAT, Hyderabad, Central Salt and Marine Chemicals Research Institute, Bhavnagar, National Institute of Oceanography, Goa, Tamil Nadu Agricultural University, Adhuthurai and Trichy, State Department of Agriculture, Joint Director of Agriculture (Nagapattinam, Cuddalore and Coimbatore), BASF India,

Village wise action plan for Agronomic Rehabilitation in Tsunami affected agricultural fields

Based on the identified issues during the traveling workshop on the Agronomic rehabilitation following villages were identified for field demonstration and participatory training taking into consideration of the type and intensity of the problems.

No	Villages	Type of the damage	Cropping system	No.of farmers	Area (ac)	pH*	EC (dS/m)*
1	Vellapallam, Vedaranyam- Tk, Nagappatinam - Dt	Clay deposit	Rainfed direct seeded rice – pulses/vegetables	16	8.28	8.6 8.45 (heaps)	4.92 15.22 (heaps)
2	Vettaikaranirrupu, Kelaiyur –Tk Nagappatinam - Dt	Clay deposit	Rainfed direct seeded rice, Casurina, cashew and ground nut	11	5 5	8.36	2.12
3	Periya Anailovil, Manikapangu Tarangambadi – Tk Nagappatinam - Dt	Water inundation	Paddy - pulses	12	13.15	4.6 6.09 (1/2' depth)	23 4.5 (15cm depth)
4	Neithavasal, Sirkazhi – Tk, Nagappatinam - Dt	Water inundation Sand deposit in drylands	Paddy - pulse Groundnut	9 9	11 7.5	7.8 7.2	0.3 to 0.8 5.7 to 9 (heaps)
5	TS Pettai, Chidambaram, Cuddalore - Dt	Water inundation paddy fields Sand deposit	Paddy Groundnut	5 5	5 5	6.94 8.14	11.84 5.74

* - readings taken at the time to Traveling workshop during 16-18th July 2005

Total area covered under Agronomic Rehabilitation: 59.93 acres (23.97 ha)

Number of farmers participating in the activity: 67

The outcomes of the workshop got translated in to local language and prepared as a brochure and distributed extensively with the farmers of the affected villages, officials of the state agricultural department and also the NGOs working in the Tsunami villages.

ICT based Village Knowledge Centres for Strengthening the Ecological and Livelihood Security of Coastal Communities

“In June 2005, when I visited Nagapattinam, I have seen the Village Resource Centre established by TATA Tsunami Relief Committee in association with MSSRF at Akkaraipettai. When I discussed with the young members who are operating the system, I found they are helping the locals by imparting education through computers, helping the Self Help Group Members to maintain their accounts, providing weather and sea state forecast data, etc. While it is very good, the important issue of providing a live database on various services to the fishermen and farmers needs to be upgraded. This has to be a coordinated effort of various institutions. I appreciate their contribution to the tsunami relief and rehabilitation operations.”



Dr A P J Abdul Kalam, Honb'e President of India

M S Swaminathan Research Foundation has set up eight Village Knowledge Centers in Tsunami affected districts in Tamil Nadu and Pondicherry. Based on the need assessment carried out by MSSRF staff and local knowledge workers, these Village Knowledge Centres provide information about weather forecasting, wave height, fish market details, boat manufacturers, employment opportunities etc. The centers also provide the school children opportunity to become computer literates and the web browsing facility to the village youths. The process of discussion with the local village communities, NGOs and District administration is going on to identify suitable villages to set up of ten more VKCs in Cuddalore, Nagapattinam and Kanyakumari districts.

The following table gives the details of the VKCs established so far and functioning in the Tsunami villages.

Name of the village	District
Kovalam	Kancheepuram
Sadras Kuppam	
Akkarapattai	Nagapattinam
Peerathamapuram	
Kadigapattinam	Kanyakumari
Keelmanakudi	
Samiyarpattai	Cuddalore
Muzhukuthurai	

NVA Fellows – SHGs members interaction meeting at Kovalam

A meeting between the Jamsetji Tata National Virtual Academy fellows and local SHGs at Kovalam was organized on 11 August 2005. The NVA Fellows Mrs Usharani, Mrs Kasthuri, Mrs Sundari and Mrs Dhanalakshmi from Embalam Village in Pondicherry shared their experiences with around 180 SHGs members.

The Fellows explained about how VKCs could support interms of meeting the local information needs. It could also supply information about the developmental schemes promoted by different agencies and could facilitate need based linkages with these institutions. They also shared how the knowledge of these fellows obtained from the VKCs have added value to their personal life. The

other aspect they discussed was about the accounts software. The accounts software developed in VKC would help the SHGs to keep the accounts in order. Since the accounts are computerized, it paves the path for accountability, transparency and trust building among the group members. VKCs could also provide the database on the local doctors, lawyers and other professionals. The fellows highlighted the publication of Namma Ooru Seithi a local news paper which carries the various information which are useful to the local communities and the role of VKC in publishing the paper.

During the feed back at the end the SHG members appreciated the fellows efforts to support the rural community and their self confidence. The meeting created awareness among the members, which could help in the future for the better use of VKC located at Kovalam. The method of sharing the Fellows with the villagers found useful, hence decided to conduct similar meeting in other Tsunami villages where MSSRF have already started the VKCs.

With the support of Village Knowledge Centre, Kovalam on July 16, 2005, Tata Relief Committee and Lions Club jointly conducted free eye camp with the technical support of Sankaranathrayala Eye Hospital. 153 people participated in this camp from Kovalam, Kunnakadu and Semanchari villages. 26 persons have been diagnosed as cataract patients. 10 persons have undergone the cataract surgery. In the follow-up camp held on July 23, 2005 doctors examined the cataract surgery patients and gave necessary medicines. They also explained to them about various precautions to be taken.

Capacity Building for the VKC workers

MSSRF has organized training and capacity building for village knowledge center workers established in the Tsunami affected villages. Under this programme aspects such as identifying skills and aptitudes, purpose of the training, introduction of village knowledge centre, different methodologies for dissemination of content, community participation, how to collect/document/disseminate local content, office maintenance, team building, group dynamics, gender and monitoring and evaluation of the VKC activities were covered.

Satellite Connectivity

Under the joint ISRO-MSSRF Village Resource Centre programme- ISRO has sanctioned satellite connectivity to Thiruvaiyaru in Tanjore, Sembatty in Dindigul district and Thangachimadam in Ramnad district. These centers will facilitate teleconferences between farm and fishing families at these locations and MSSRF scientists as well as with leading experts in the area of health, education, agriculture, fisheries, marketing and disaster management. Now ISRO has kindly agreed to expand the VRC programme to the Tsunami affected villages in Pondicherry, Nagapattinam, Chidambaram, and Kanyakumari.

Psychological rehabilitation

Back to Normalcy: Based on the interests shown at Sadraskuppam to the play 'The New Wave' towards psychological rehabilitation, MSSRF organized the play in collaboration with Nalamdana a Chennai based NGO at Muzhkuthurai also on 23rd and Madavamedu on 25th July 2005 to the tsunami victims with the support of the local village Panchayats. Villagers from the other hamlets located in the surroundings also witnessed the play. The play focused to help the fishing community to overcome the fear of sea, Tsunami, and some of the social problems like alcoholism and

domestic violence, breaking social relationships and institutions in the post tsunami context. The importance of mangroves forests was also covered. There was a feed back session at the end of the play. During the feedback the village youths promised that they would not demand for dowry and also told that they would convey the message to the other youths. It helped them to realize the importance of mangroves and similar biological barriers to mitigate the unexpected natural disasters. The play helped to clarify some of the doubts about Tsunami and over come the fear.

Tool kits and Capacity building

The toolkits on Coastal Biovillages, Bioshield and Village Knowledge Centre meant for field level workers engaged in the development works have been published. Two of them Coastal Biovillage and Bioshield got translated in to Tamil. These toolkits were distributed to all Government and Non Government partnering institutions.

Orientation and training for NGOs

A number of NGOs are working in the tsunami affected villages of the Tamil Nadu coast. Many of them are interested in developing and managing mangrove and non-mangrove bioshield in the tsunami affected areas. However, it is often mentioned in NGO coordination meetings and informal discussion that many of these NGOs need technical support to develop bioshields. With this in background, a three day Orientation workshop was conducted from 27th July to 29th July 2005 at Chidambaram for the representatives of the NGOs. The main aims of the workshop are to i) provide orientation to technical and participatory aspects of developing and managing mangrove bioshield and ii) establish partnership among NGOs that are interested in long-term conservation and management of mangroves. Representatives from 18 local NGOs participated in this orientation workshop.

Similarly MSSRF organized a three days workshop on 3 – 5 August, 2005 at Pondicherry on Coastal Bio-village Toolkit for representatives of NGOs representatives, who are working to re-building the livelihoods for the Tsunami victims in the coastal districts of Tamil Nadu and Pondicherry.



The workshop was conducted in an interactive mode. More than 30 participants from 27 NGOs from Pondicherry, Cuddlore, Chidambaram, Karaikal, Sirkali, Villupuram participated in the workshop. The workshop explained the `Biovillage' framework which concurrently address the twin concerns of

Natural Resource Management and Livelihood security of the resource poor in the context of Tsunami rehabilitation. The following aspects were discussed in detail, a) the steps involved in developing a biovillage, b) NRM management and livelihood opportunities in aquaculture (both in capture and culture fisheries), agriculture and c) agronomic rehabilitation of the Tsunami affected agricultural fields, d) the role of the grassroot institutions like biocouncils, fisher and farmers associations. A field visit was also organized, the participants interacted with the village women and men of Kodathur to discuss some of the ongoing livelihood activities with effective forward and backward linkages with the support of banks, technical institutions, government departments and a marketing company. It is planned to organize similar workshop soon to the NGOs working on livelihoods in Nagapattinam and Kanyakumari districts of Tamil Nadu

Long term Educational and Nutritional Support for children orphaned by tsunami

Bharat Soka Gakkai (BSG) and MSSRF has entered in a MoU to provide financial support necessary for education and nutritional support to the identified children orphaned by Tsunami in the state of Tamil Nadu and Andaman and Nicobar Islands. Visits to the district social welfare department and District Rural Development Agency helped to get the details about the orphaned children. A survey is designed to identify the most needy children for education and nutrition support, discussion is going on with the district educational department to find out the possibility to provide admission to the best schools in the district with hostel facilities.

Friends of MSSRF, Tokyo support for Tsunami rehabilitation

'Friends of MSSRF in Tokyo' is an international group of people living in Tokyo, Japan, who understand that globalization is an opportunity as well as a responsibility. Improving economic conditions throughout the world brings peace, prosperity, care of the environment, and general goodwill to our ever-expanding world community. In effort to support Tsunami relief operations of they have organized support from several institutions and universities and individuals. The Women Group of Tokyo American Club, is a non profit organization based in Tokyo, Japan have extended financial support to be part of Tsunami relief work initiated by MSSRF. Students of Japan studying in Komazawa University have started Micro credit banks to extend interest-free loans to Tsunami affected women/ widows and Self Help Groups to start Income generating activity for livelihood.

Educational support to the Tsunami orphaned children: MSSRF identified five Tsunami orphaned children from Kanyakumari district with the support of the District educational office and Social welfare department who are orphaned and semi-orphaned who needs to be financially helped/supported in continuing their studies (ten students were identified initially, but due to the guardians and students unwillingness, five students were dropped in the process). MSSRF and District Educational office prepared a plan to support the children up to 12th standard with annual budget requirements for each child, inputs in terms of fee, lodging and other requirements were gathered from the best boarding schools located at Nagarkoil. MSSRF discussed with Guardians, Headmasters and proposed recipient students and explained to them about MSSRF and proposed plan to support their education with the support of the district educational office. The District educational office collected the consent letter from the Guardian of students and the Bio-data of the students. Based on the discussion with the Chief Educational Officer an MOU was drawn between MSSRF and CEO, Nagercoil for the implementation of programme on support to orphaned children

to continue their education till 12th standard. Implementation would start after signing the MOU.

Confidence and capacity building for Tsunami widows: In effort to work in coordination with others NGOs working in Tsunami relief and rehabilitation work at Nagercoil. We had approach Kanyakumari Rehabilitation Resource Centre, Nagercoil , a coordinating NGOfor Tsunami relief operations at Nagercoil. After a meeting with them they had introduced to us the KODI TRUST, Nagercoil. With the help of Kumari Organization For Development Initiatives (KODI) Trust, an NGO working the coastal districts of Kanyakumari we have identified women/ widows members of SHGs and have initiated work in organizing training programmes for them. The training and income generation programmes would be organized taking into consideration their need and to rehabilitate them to sustainable Income earning activity.
